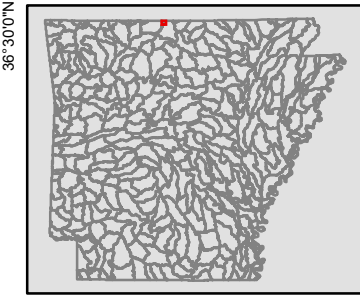
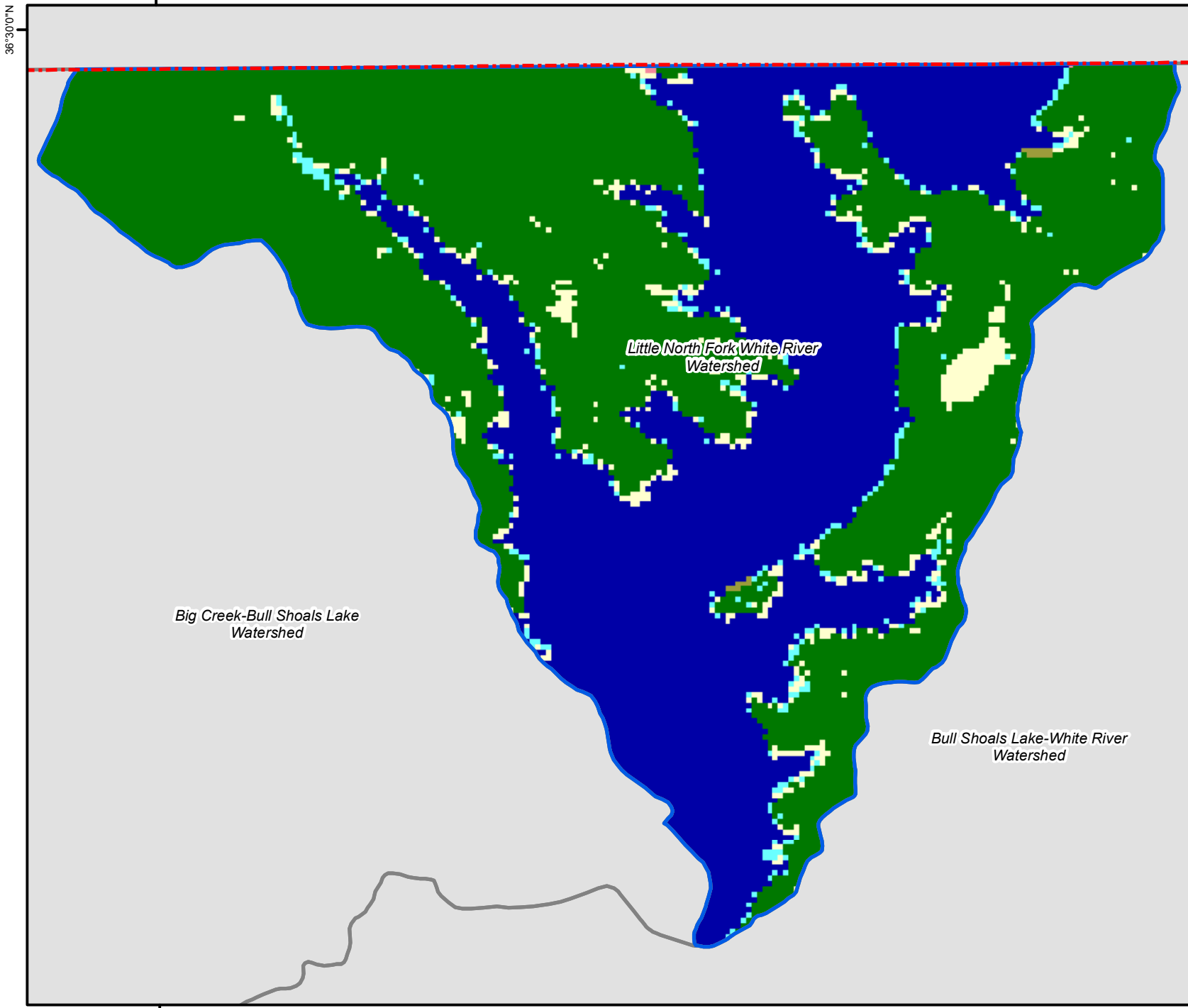


36°30'0"N 92°40'0"W



Land Use Category

- Urban - Low Density
- Urban - High Density
- Barren/Bare Soil
- Water
- Herbaceous/Woody/Scrub
- Forest
- Agriculture - Crops
- Agriculture - Pasture

Big Creek-Bull Shoals Lake Watershed

Little North Fork White River Watershed

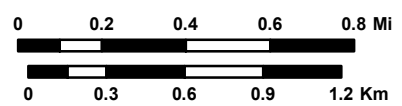
Bull Shoals Lake-White River Watershed



92°40'0"W



**Little North Fork White River
Land Use / Land Cover, 2004**



Map produced by the Center for
Advanced Spatial Technologies, 2008.

Map Legend

-  Interstate Highway
-  State Highway
-  U.S. Highway
-  Other Roads
-  County Boundary
-  Streams
-  Waterbodies
-  Current Watershed Boundary
-  Watershed Boundary

For all watersheds that cross the Arkansas border, only the Arkansas portion of the watershed was used for mapping and statistical reporting.

All highway and road information provided by the Arkansas State Highway and Transportation Department. Publication date: August 29, 2006.

County boundaries provided by the Arkansas State Highway and Transportation Department. Publication date: January 1, 2001.

Watershed boundaries provided by the Arkansas State Office of the US Natural Resources Conservation Service. Publication date: 2005.

Streams and waterbodies provided by the US Geological Survey, National Hydrography Dataset. Publication date: 1999.

Placenames provided by the US Census Bureau as Census Designated Places. Publication date: 2000.

Land Use / Land Cover data provided by the Center for Advanced Spatial Technologies, University of Arkansas. Publication date: October 2005.