

91°10'0"W 91°5'0"W 91°0'0"W 90°55'0"W 90°50'0"W

34°5'0"N

34°5'0"N

34°0'0"N

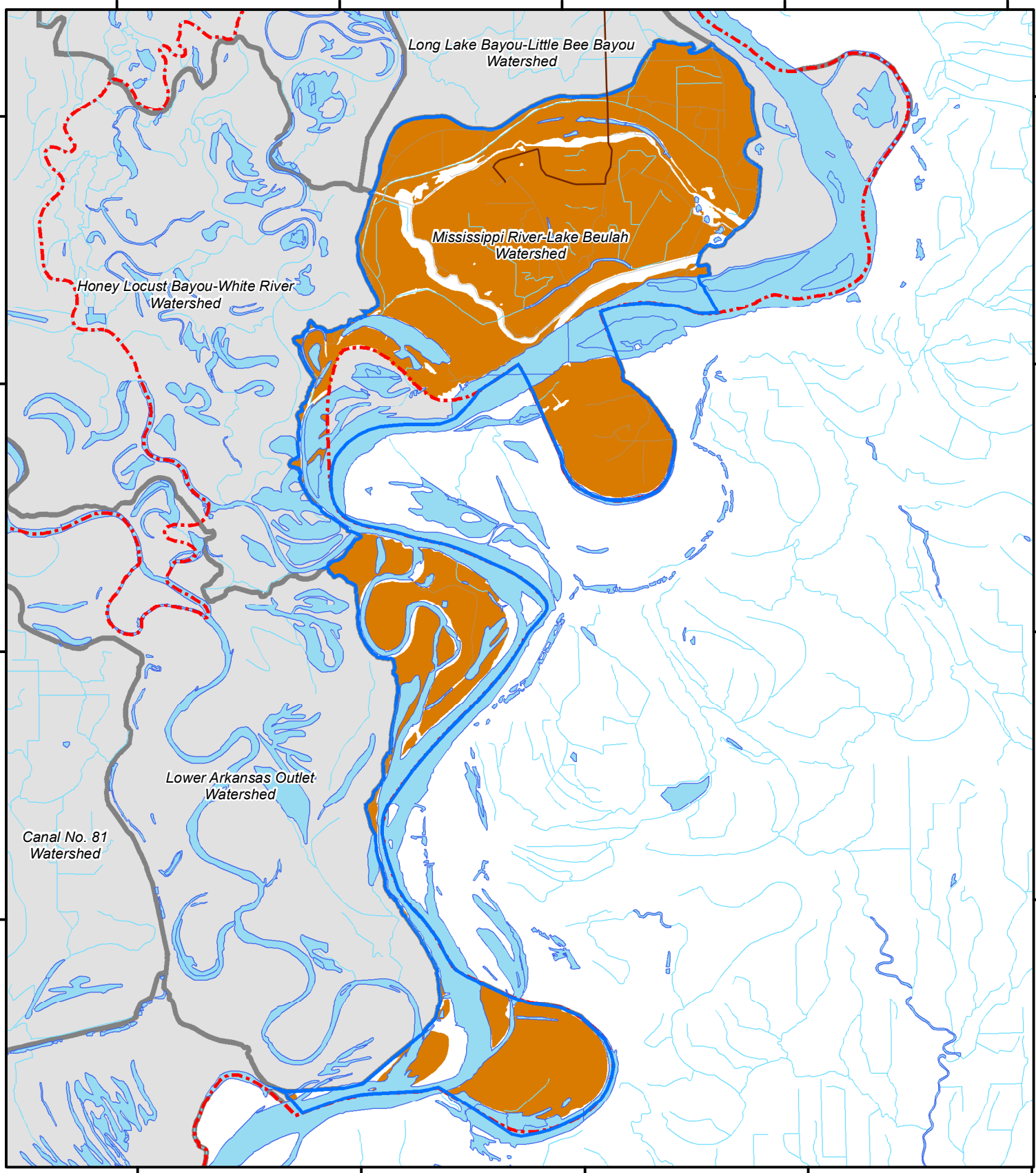
34°0'0"N

33°55'0"N

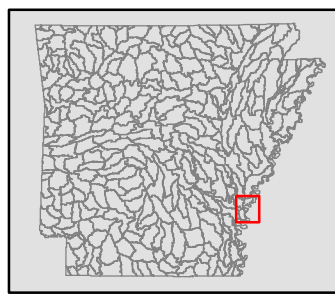
33°55'0"N

33°50'0"N

33°50'0"N



91°10'0"W 91°5'0"W 91°0'0"W 90°55'0"W 90°50'0"W



Mississippi River-Lake Beulah Soils - Septic Tank Suitability Rating

Nominal Scale
1:180,000






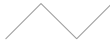




Map produced by the Center for Advanced Spatial Technologies, 2006.
Funding for the Arkansas Automated Reporting and Mapping System
provided by the Arkansas 85th General Assembly through the
Arkansas Natural Resources Commission.

Suitability Rating

- Not limited
- Slightly limited
- Somewhat limited
- Moderately limited
- Limited
- Very limited
- Not rated



Map Legend

-  Interstate Highway
-  State Highway
-  U.S. Highway
-  Other Roads
-  County Boundary
-  Streams
-  Waterbodies
-  Current Watershed Boundary
-  Watershed Boundary

For all watersheds that cross the Arkansas border, only the Arkansas portion of the watershed was used for mapping and statistical reporting.

Septic suitability ratings are based on the soil properties that affect absorption of septic effluent, construction and maintenance of the septic system, and public health. Ratings are aggregated for each mapping unit based on the dominant soil component. **Septic suitability ratings refer only to the soils found in any given geographic location and do not account for other geographic limitations on septic tank placement, such as proximity to streams or local topography. A good suitability rating does not imply or guarantee acceptance or permitting by local health department officials.**

SSURGO (Soil Survey Geographic Database) soils data provided by the US Natural Resources Conservation Service. Publication dates: 2000-2007.

All highway and road information provided by the Arkansas State Highway and Transportation Department. Publication date: August 29, 2006.

County boundaries provided by the Arkansas State Highway and Transportation Department. Publication date: January 1, 2001.

Watershed boundaries provided by the Arkansas State Office of the US Natural Resources Conservation Service. Publication date: 2005.

Streams and waterbodies provided by the US Geological Survey, National Hydrography Dataset. Publication date: 1999.

Placenames provided by the US Census Bureau as Census Designated Places. Publication date: 2000.