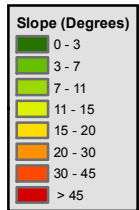
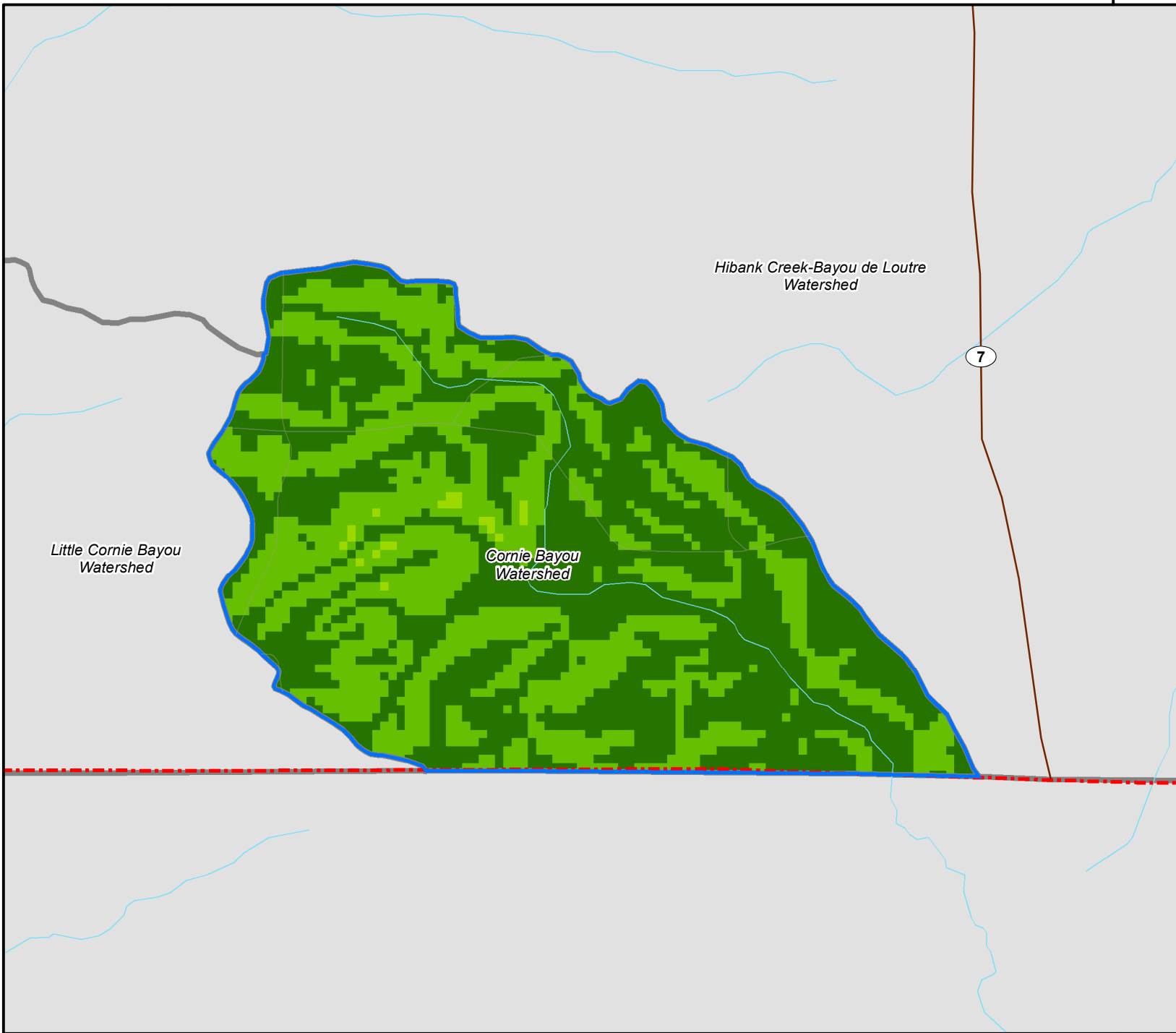
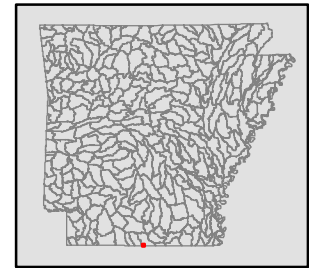


92°35'0"W



Nominal Scale
1:20,000



92°35'0"W

Cornie Bayou
Slope (Degrees)

Map produced by the Center for Advanced Spatial Technologies, 2006. Funding for the Arkansas Automated Reporting and Mapping System provided by the Arkansas 85th General Assembly through the Arkansas Natural Resources Commission.

Map Legend

-  Interstate Highway
-  State Highway
-  U.S. Highway
-  Other Roads
-  County Boundary
-  Streams
-  Waterbodies
-  Current Watershed Boundary
-  Watershed Boundary

For all watersheds that cross the Arkansas border, only the Arkansas portion of the watershed was used for mapping and statistical reporting.

All highway and road information provided by the Arkansas State Highway and Transportation Department. Publication date: August 29, 2006.

County boundaries provided by the Arkansas State Highway and Transportation Department. Publication date: January 1, 2001.

Watershed boundaries provided by the Arkansas State Office of the US Natural Resources Conservation Service. Publication date: 2005.

Slope derived from the National Elevation Dataset (30 Meter resolution), provided by the US Geological Survey. Publication date: 2001.

Streams and waterbodies provided by the US Geological Survey, National Hydrography Dataset. Publication date: 1999.

Placenames provided by the US Census Bureau as Census Designated Places. Publication date: 2000.